

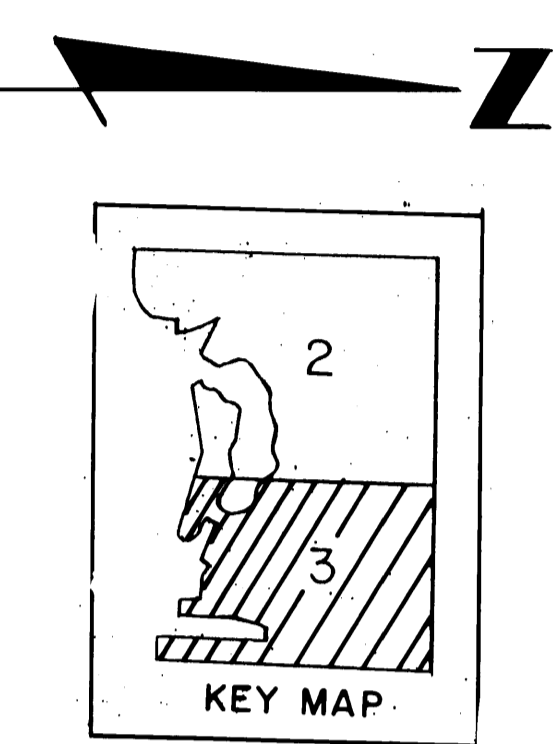
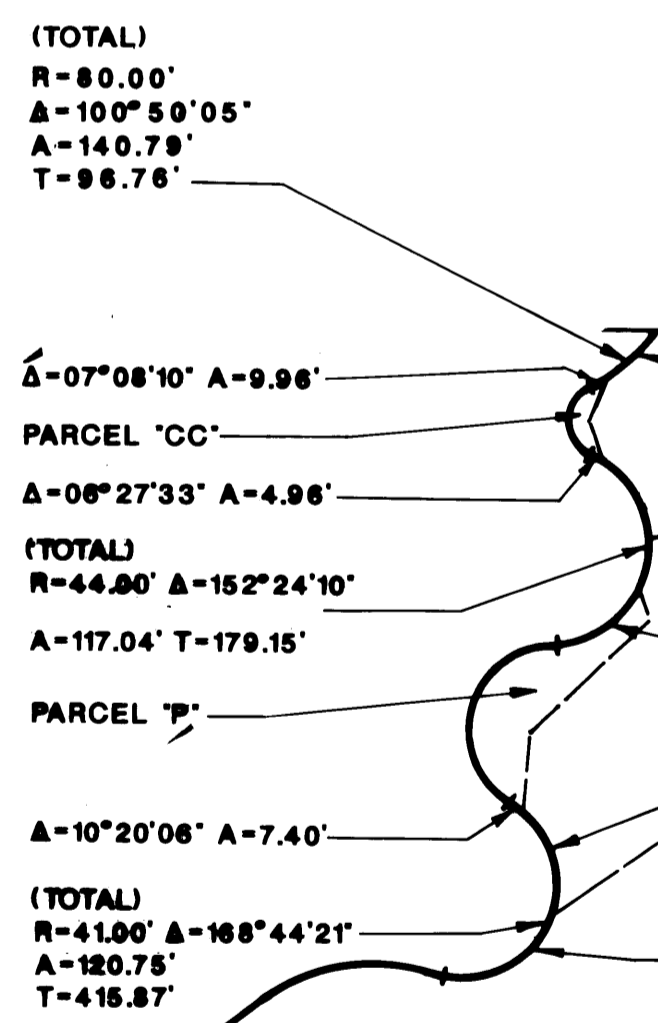
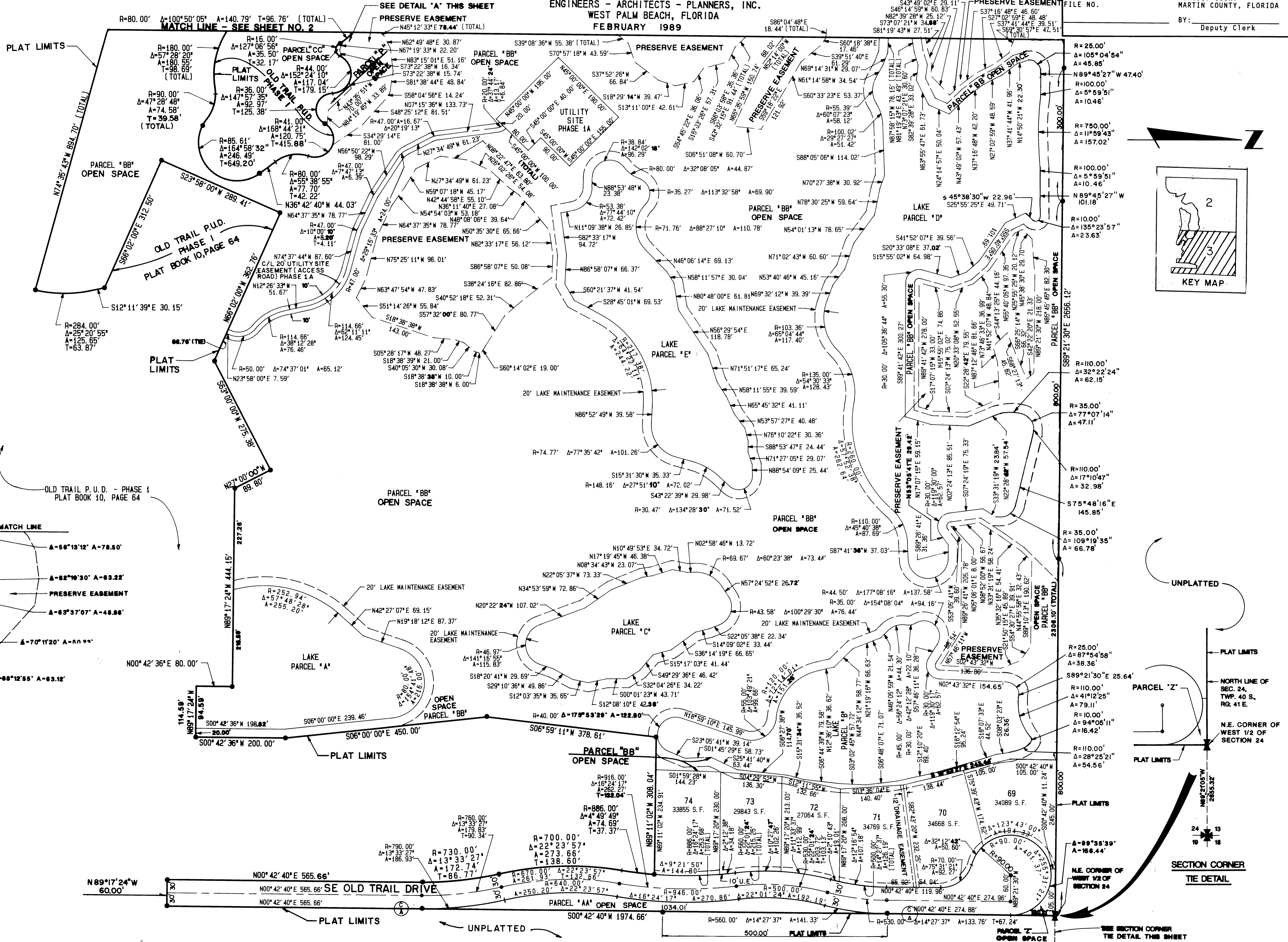
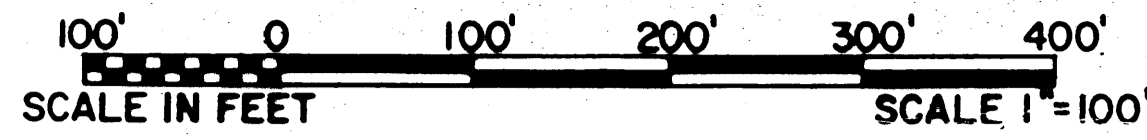
OLD TRAIL P.U.D. - PHASE 2

IN PART OF SECTIONS 23 AND 24, TOWNSHIP 40 SOUTH, RANGE 41 EAST
MARTIN COUNTY, FLORIDA

GEE & JENSON
ENGINEERS - ARCHITECTS - PLANNERS, INC.
WEST PALM BEACH, FLORIDA
FEBRUARY 1989

I, Marsha Stiller, Clerk of the Circuit Court of Martin County, Florida, hereby certify that this plat was filed for record in Plat Book 11, Page 96, Martin County, Florida Public Records, this _____ day of _____, 1989 A.D.

MARSHA STILLER, CLERK
CIRCUIT COURT
MARTIN COUNTY, FLORIDA
BY: _____
Deputy Clerk



COMPUTED	D.F.B.
DRAWN	D.F.B.
CHECKED	D.W.L.
COMMENTS	
APPROVED	
REVISION	

